

District of Columbia

STATE DATA CENTER FACT SHEET



By
Caryn Thomas

These indicators were derived from data produced by the U.S. Census Bureau and may differ from data produced by other entities.

Mother's Day: May 11, 2014

Introduction

The driving force behind Mother's Day was Anna Jarvis, who organized observances in Grafton, WV, and Philadelphia on May 10, 1908. As the annual celebration became popular around the country, Jarvis asked members of Congress to set aside a day to honor mothers. She succeeded in 1914, when Congress designated the second Sunday in May as Mother's Day. Below are facts on DC mothers.

How Many Mothers

7,632

Number of DC women between the ages of 15 and 50 who gave birth in the past 12 months (2012 ACS 1-year estimates).

40

The total fertility rate or estimated number of total births per 1,000 women in DC (2012 ACS 1-year estimates).

Recent Births

9,370

Number of births registered in DC in 2012. Of this number, 796 were to teens 13 to 19 and 36 to women age 45 to 55 (DC Department of Health).

29.2

Average age of DC women in 2012 that gave birth (DC Department of Health).

44.7%

The percentage of DC mothers who had given birth in the past 12 months who had a bachelor's degree or higher and 80.2 percent of mothers have at least a high school diploma (2012 ACS 1-year estimates).

William and Sophia

The most popular DC baby names for boys and girls, respectively, in 2012 (Social Security Administration).

36

Number of DC births in the past year per 1,000 women age 15 to 50 with a graduate or professional degree. The number was 33 per 1,000 for women whose highest level of education was a bachelor's degree (2012 ACS 1-year estimates).

Employed Moms

64.3%

Percentage of DC women age 16 to 50 who had a birth in the past 12 months who were in the labor force (2012 ACS 1-year estimates).

Single Moms

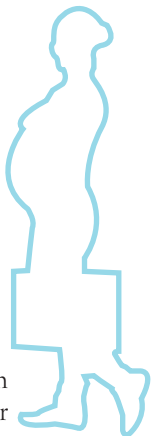
20,051

The number of single DC mothers living with own children younger than 18 in 2012 (2012 ACS 1-year estimates).

42.3%

Percentage of DC births in the past 12 months that were to women age 15 to 50 who were unmarried (including divorced, widowed and never married women) (2012 ACS 1-year estimates).

In 2012, 559 DC mothers who had a birth in the past 12 months were living with a cohabiting partner.



*Graphics courtesy of Rishawna Gould.