

Application for a Commemorative Work on District of Columbia  
Public Space

Washington, D.C.

Lincoln: The Emancipation Proclamation Freedom and Union

Submitted by

The African American Civil War Memorial Freedom  
Foundation, Inc.

Submitted to the District of Columbia Commemorative Works Committee  
(February 15, 2021)

## Table of Contents

I. SPONSORING ORGANIZATION .....	3
II. PROJECT DESCRIPTION.....	4
III. PROJECT LOCATION.....	6
IV. PROJECT DESIGN.....	15
V. COMMUNITY OUTREACH .....	18
VI. PROJECT BUDGET .....	19
VII. ADDITIONAL MATERIALS .....	20

## Table of Figures

Figure 1 – Vicinity Map.....	6
Figure 2 – Aerial Map.....	7
Figure 3 – DC Property Quest Map .....	7
Figure 4 – DC Zoning Map Snapshot .....	8
Figure 5 – Property Proposed Site Plan .....	9
Figure 6 – “Existing Conditions” Site Plan (Under Construction) .....	10
Figure 7 – Proposed Conditions Site Plan .....	10
Figure 8 - Project Site Plan.....	11
Figure 9 – Grading Plan.....	12
Figure 10 – Utility Plan.....	13

## Appendices

- Appendix A: Articles of Incorporation and Bylaws
- Appendix B: Officers of The African American Civil War Memorial Freedom Foundation, Inc.
- Appendix C: Letters of Support
- Appendix D: Statue Agreement with Atlas Bronze Casting
- Appendix E: Environmental Impact Statement Form (Reference)
- Appendix F: Civil Engineering Plans
- Appendix G: Landscape Architecture Plans
- Appendix H: Architectural Plans
- Appendix I: Management and Indemnification Agreement

## I. SPONSORING ORGANIZATION

### 1. Name of Commemorative Work

Lincoln: The Emancipation Proclamation Freedom and Union

### 2. Sponsoring Organization

The African American Civil War Memorial Freedom Foundation Museum  
1925 Vermont Ave. NW  
Washington, D. C. 20001

Contact person: Frank Smith  
202-369-5119 cell  
202 667-2667 office  
202-667-6771 fax  
franksmith@afroamcivilwar.org

See Appendix A for Articles of Incorporation and Bylaws of non-profit.

### 3. Description of Sponsoring Organization

The African American Civil War Memorial Freedom Foundation is a non-profit tax-exempt corporation incorporated in the District of Columbia in 1992. It is the mission of the AACWMFF to correct a great wrong in history which pretty much ignored the significant contributions of the 209,145 United States Colored Troops in the Civil War who joined president in the fight to end slavery and keep America united under one flag. The AACWMFF was incorporated in the District of Columbia in 1992 and has since raised public awareness and sought federal approval for the building of the African American Civil War Memorial that was dedicated in 1998 and turned over to the NPS in 2003. In 2000 the Foundation sponsored the African American Civil War museum to collect artifacts, build and operate a museum and host thousands of tourists each year. The museum also sponsors a "Passport to Freedom" program which sends trained docents to area schools informing them of the many resources the museum offers to enhance teaching and learning in the schools. Thousands of teachers and students visit the museum each year and the Lincoln will add greatly to the teaching opportunities being provided. The incorporation papers and by-laws for the Freedom Foundation are also attached.

### 4. Board of Directors

The Chairperson of the Board of Directors is Audrey Hinton, a local resident who is a retired federal employee and the descendant of one of the soldiers whose name is included on the Wall of Honor of the memorial. The Secretary of the Board is Rev. Paul Saddler, Senior Pastor of the 12th Street Christian Church and a District resident. The Treasurer is Christine Bennett, a retired DC public teacher and a resident of the District. A complete listing and brief description of the full board is attached.

## II. PROJECT DESCRIPTION

### 5. Summary of Proposed Commemorative Work

The Lincoln: Emancipation statue advances the recommendations of the Duke Plan, which is the result of a lengthy community planning effort supported by ANC 1B and Councilmember Nadeau, to take advantage of the economic vitality to be generated by the Grimke building commercial development to unify Grimke and the African American Civil War Memorial across Vermont Avenue. The Duke Plan recommended the use of street scape, pavers, shrubbery and artistic elements to further enhance the development of an African American Civil War Memorial Plaza. After lengthy negotiations with the various regulatory and safety agencies at DDOT and other consultations we arrived at the Lincoln as the safest and most appropriate way to carry out the basic element of the Duke Plan of enhancing the Memorial Plaza concept. Persons standing on the porch of the museum at Grimke would be able to peer over the the bronze statue of Lincoln and see the Spirit of Freedom monument and memorial Wall of Honor across Vermont Ave. To further achieve the public safety goal an opening in the Vermont Ave median will be closed by the project and two flag poles placed there to further guide the eye across Vermont from one side to the other. Persons standing at the bronze Spirit of Freedom at the memorial would be able to look across Vermont Ave and see the bronze statue of Lincoln and know something worth seeing was happening there.

### 6. Subject of Commemorative Work

The subject of the Commemorative Work is Lincoln captured in bronze at the moment when he is signing the Emancipation Proclamation. The Proclamation promised freedom but paragraph eight stated “Persons of suitable condition will be received in the Union army”. Through paragraph eight marched the 209,145 USCT soldiers whose names are engraved on the Memorial Wall of Honor across Vermont Ave. So in many ways this exhibit will join Lincoln and his 209,145 Black soldiers who helped Lincoln end slavery and keep America united under one flag.

### 7. Relationship of Commemorative Work to District of Columbia History and Culture

Slavery was legal in the District of Columbia during the Civil War until 1862 when Congress authorized the DC Compensated Emancipation Act which authorized President Lincoln to purchase the freedom of about 3,100 enslaved persons living in the District. At the time of the compensated emancipation, there were more than 3,500 mostly runaway slaves living at a contraband Camp Barker located between 11th and 13th Streets NW from S Street south to Logan Circle. A few of the persons living there were freed by the April 16, 1862 Act but most were not because they did not have their owners consent. One of those slaves was Mary Dines, a runaway from Maryland who had become President Lincoln’s cook at the Soldiers Home. To reach Soldiers Home from the White House President Lincoln often traveled north along Vermont Ave and in late June 1862 while the President was writing the Emancipation Proclamation, Mary Dines convinced the President to stop and visit the former slaves who would benefit from his bold action. Mary Dines saved for

us a photo made by the famous photographer Matthew Brady, to mark the day of the President's visit. Sitting on the site today is the William Lloyd Garrison Elementary school. Out Camp Barker came an infirmary at Camp Barker Freedman's Hospital, now Howard University Hospital, Metropolitan Baptist church, Vermont Ave Baptist church and the first residents of historic U Street.

Lincoln and this project will bring back to life the historic Grimke Building named for Archibald Grimke. In addition to the African American Civil War museum the Grimke project includes some low- and moderate-income housing and an architect firm that is relocating from Maryland and bringing 100 new employees to the economy of U Street.

### III. PROJECT LOCATION

#### 8. Project Location

The project is located at 1925 Vermont Avenue NW, Washington, DC 20001 in Ward 1, formally known as Lot 837 in Square 361. The redeveloped building (currently under construction) will provide a new home for the African American Civil War Museum. The new space fronts Vermont Avenue NW, approximately 200 feet south of the intersection with U Street NW, and is located across from the African American Civil War Memorial. The proposed statue of President Lincoln, for which this application to CWC is made, will be located within the Vermont Avenue NW public right-of-way, at the entry to the Museum.

Figure 1 provides a Vicinity Map, Figure 2 provides and Aerial Map, and Figure 3 provides a DC PropertyQuest Map.

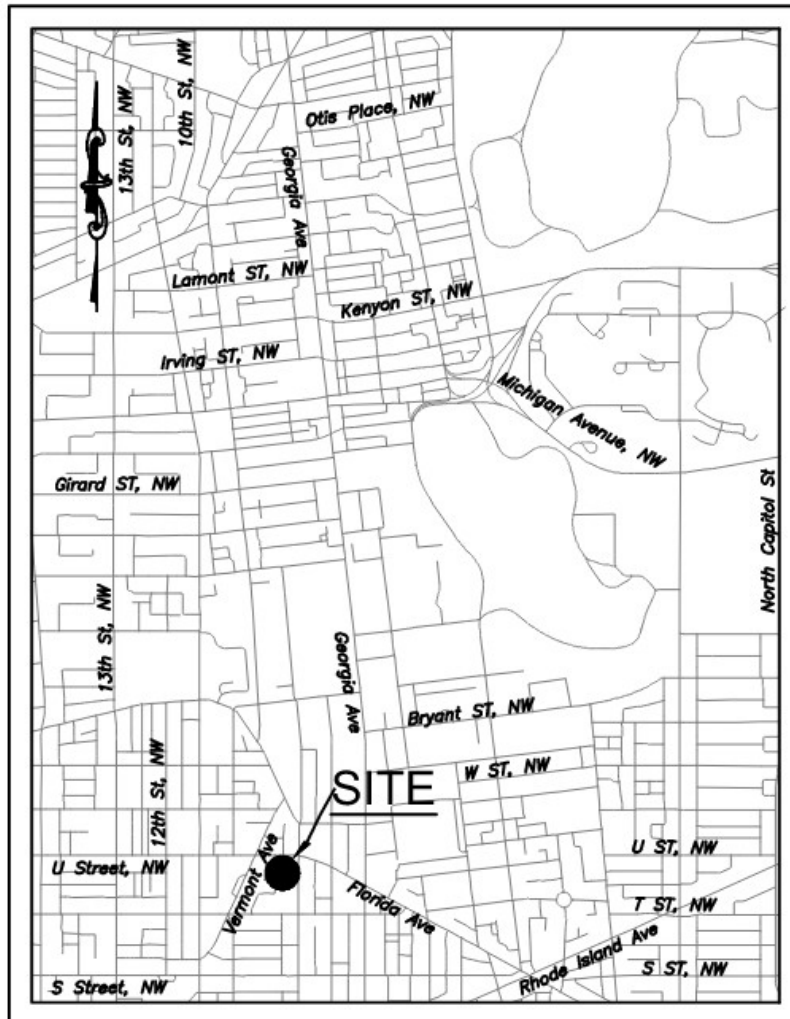
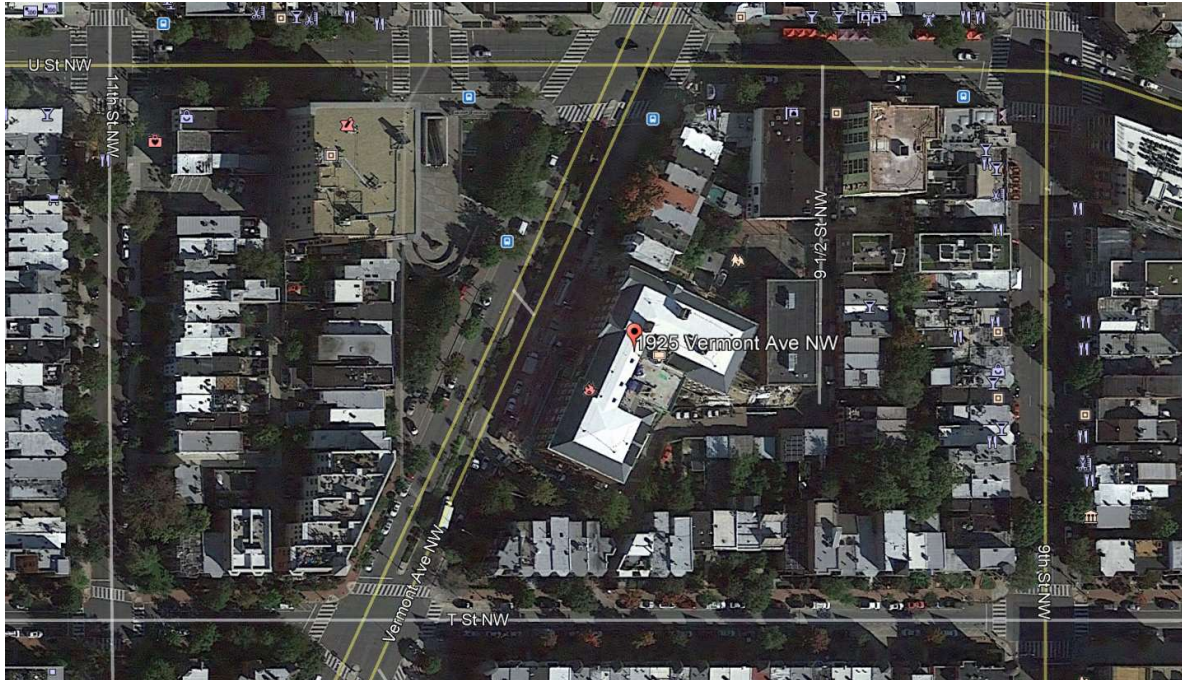


Figure 1 – Vicinity Map  
Source: AMT, LLC



*Figure 2 – Aerial Map  
Source: Google Earth*



*Figure 3 – DC Property Quest Map  
Source: DC Property Quest*

## 9. District Government Agency with Oversight

The District Department of Transportation (DDOT) has jurisdiction over the project.

## 10. Existing Conditions

Describe existing conditions of proposed site of the commemorative work and the general conditions surrounding area within ½ mile (land use patterns, zoning, etc.) Include clear photos (no copies) and a site plan of existing conditions (sidewalks, utilities, site topography, streets).

The property is currently under redevelopment by Community Three Grimke, LLC. The African American Civil War Museum is currently a tenant in a portion of the building fronting 9 ½ Street. Upon completion of the Grimke School portion of the building, fronting Vermont Avenue, the African American Civil War Museum will move into new space fronting Vermont Avenue and opposite the African American Civil War Memorial. Zoning is ARTS-2. Surrounding zoning also includes RF-1, ARTS-1, and ARTS-4. Nearby uses includes residential single family, multifamily, and neighborhood retail. The redevelopment of the site (currently under construction) includes office uses.



Figure 4 – DC Zoning Map Snapshot

The U Street/African American Civil War Memorial/Cardozo metro stop (green/yellow lines) is located directly across Vermont Avenue NW from the project site. There is a WMATA bus stop (lines 63 and 64) located approximately 100' north of the site on Vermont Avenue NW. Fronting the



site, Vermont Avenue NW is a two-way roadway with two travel lanes in each direction, on-street parking, and a planted median. Figure 5 depicts the site plan for the project with a dashed line indicating the approximate limits for Figures 6 and 7.

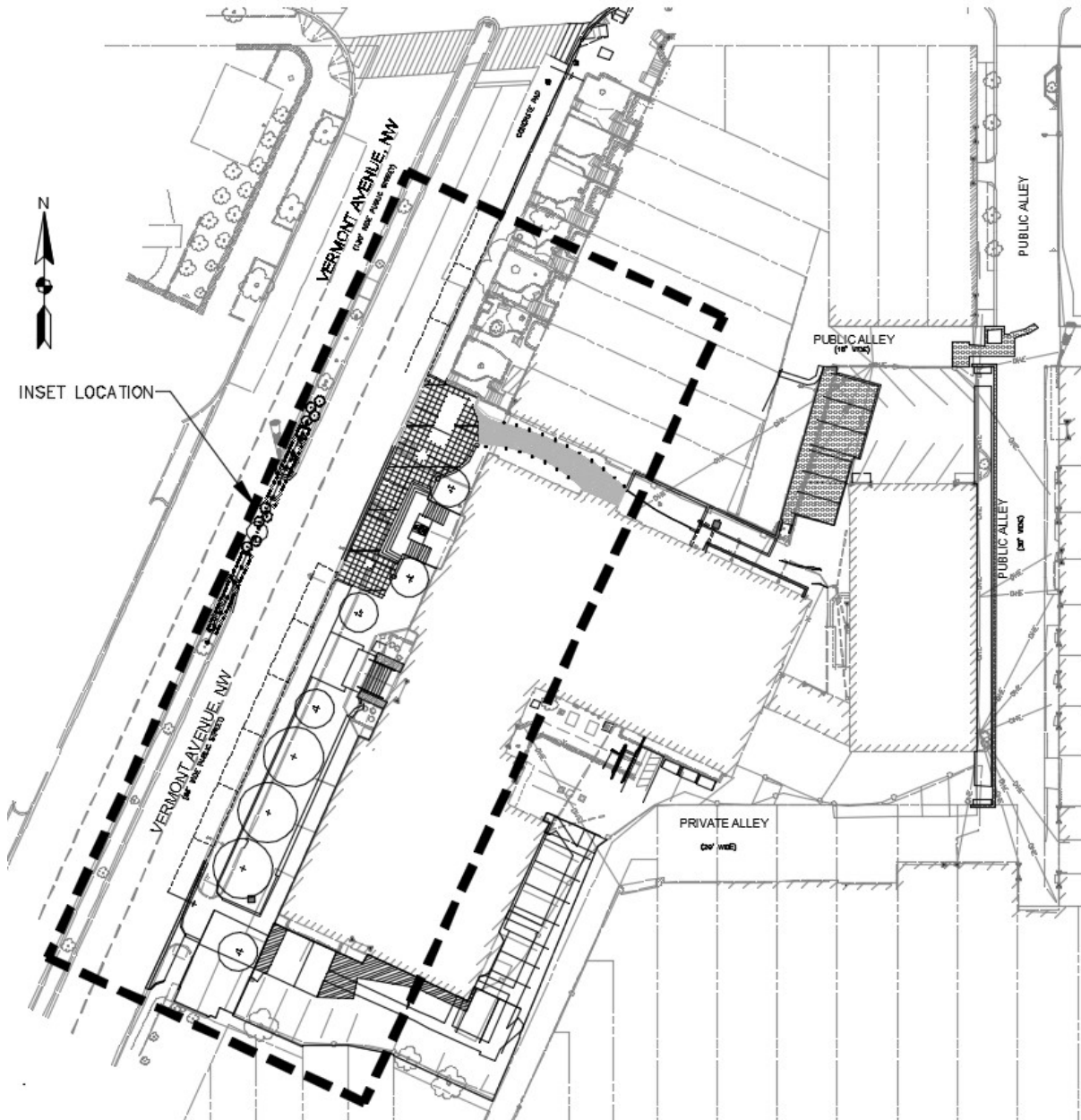


Figure 5 – Property Proposed Site Plan

The site is currently under construction with improvements including closure of an existing curb cut, relocation of a curb cut, sidewalks, monumental stair, planters, ADA ramp, bioretention, streetlights, bike racks, and landscaping (DDOT permit 318436). The African American Civil War Museum seeks to modify the proposed monumental stair to insert the President Lincoln statue and add granite paving surrounding the monumental stair (DDOT permit 358730, pending).

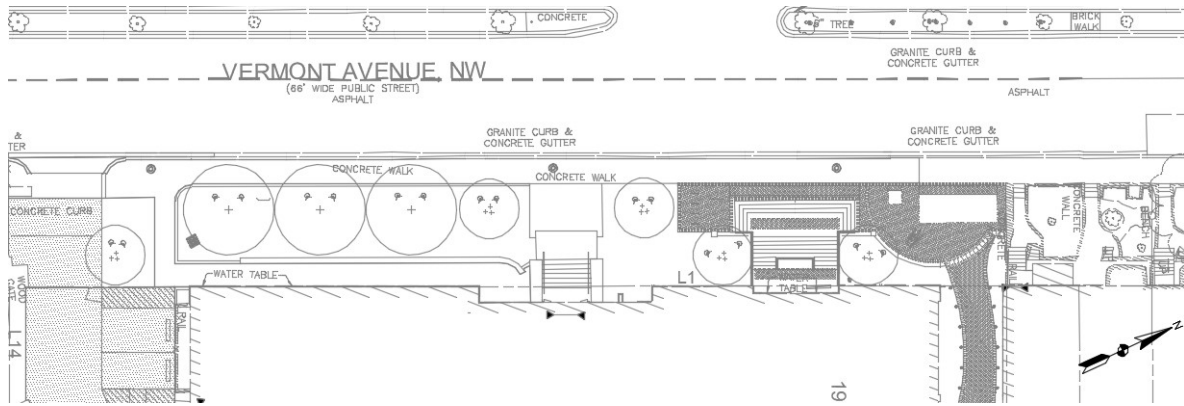


Figure 6 – “Existing Conditions” Site Plan (Under Construction)  
Source: AMT, LLC

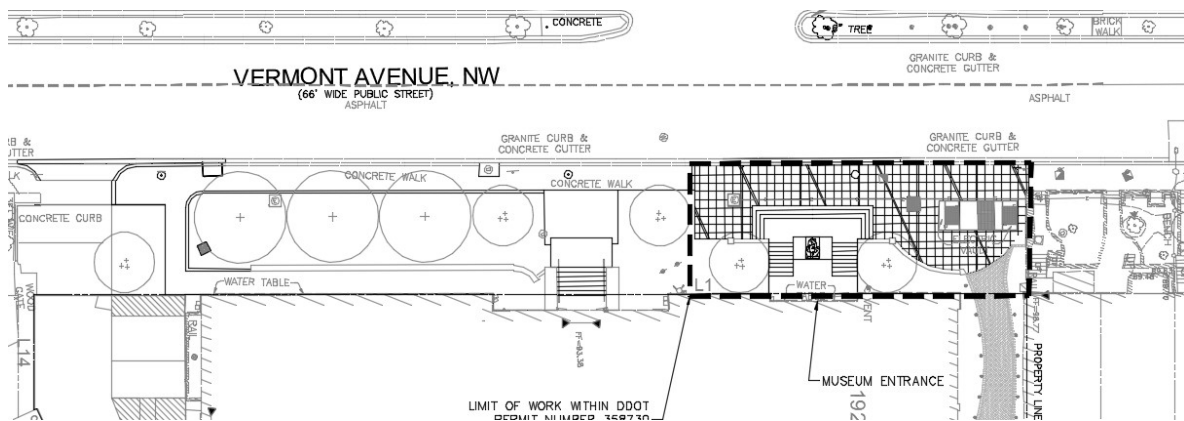
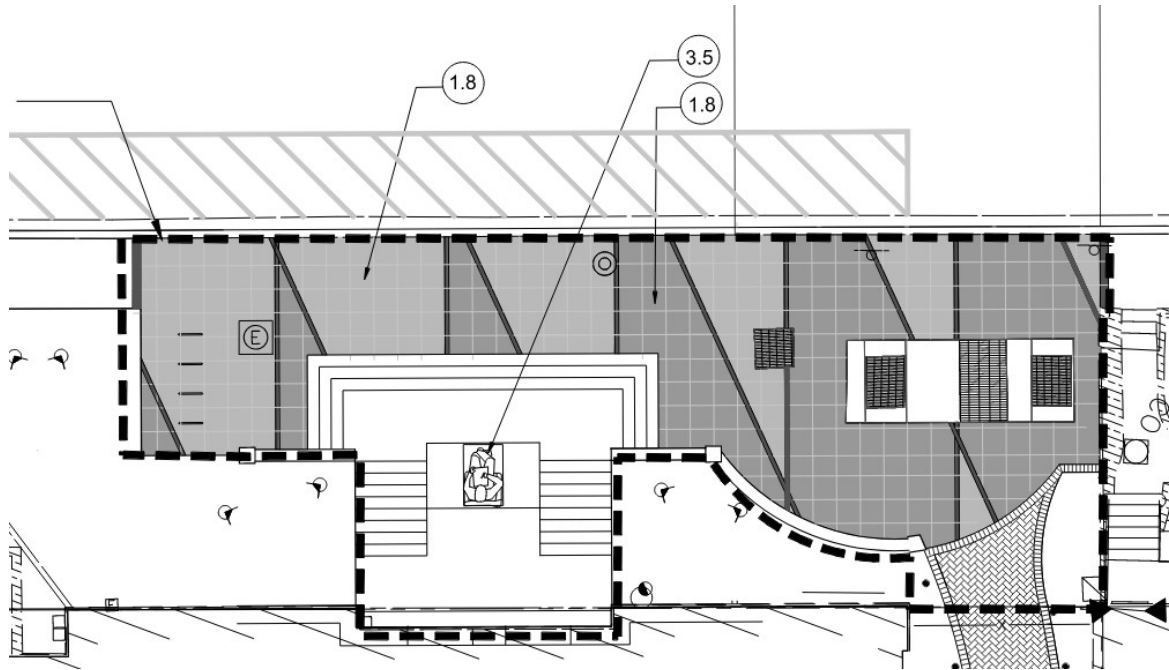


Figure 7 – Proposed Conditions Site Plan  
Source: AMT, LLC



- 1.8 GRANITE PAVING TO MATCH AFRICAN AMERICAN CIVIL WAR MEMORIAL ACROSS VERMONT AVE
- 1.9 8"x12" GRANITE CURB
- 3.5 MODIFICATION TO MUSEUM ENTRANCE STEPS TO PROVIDE PLATFORM FOR SCULPTURE

*Figure 8 - Project Site Plan*  
*Source: Synterra, Ltd.*

Topography is relatively flat with Vermont Avenue NW falling from north to south. The site drains towards the Vermont Avenue NW roadway where water is collected in drainage inlets and directed to the combined sewer system. See Figure 8 for a Grading Plan.

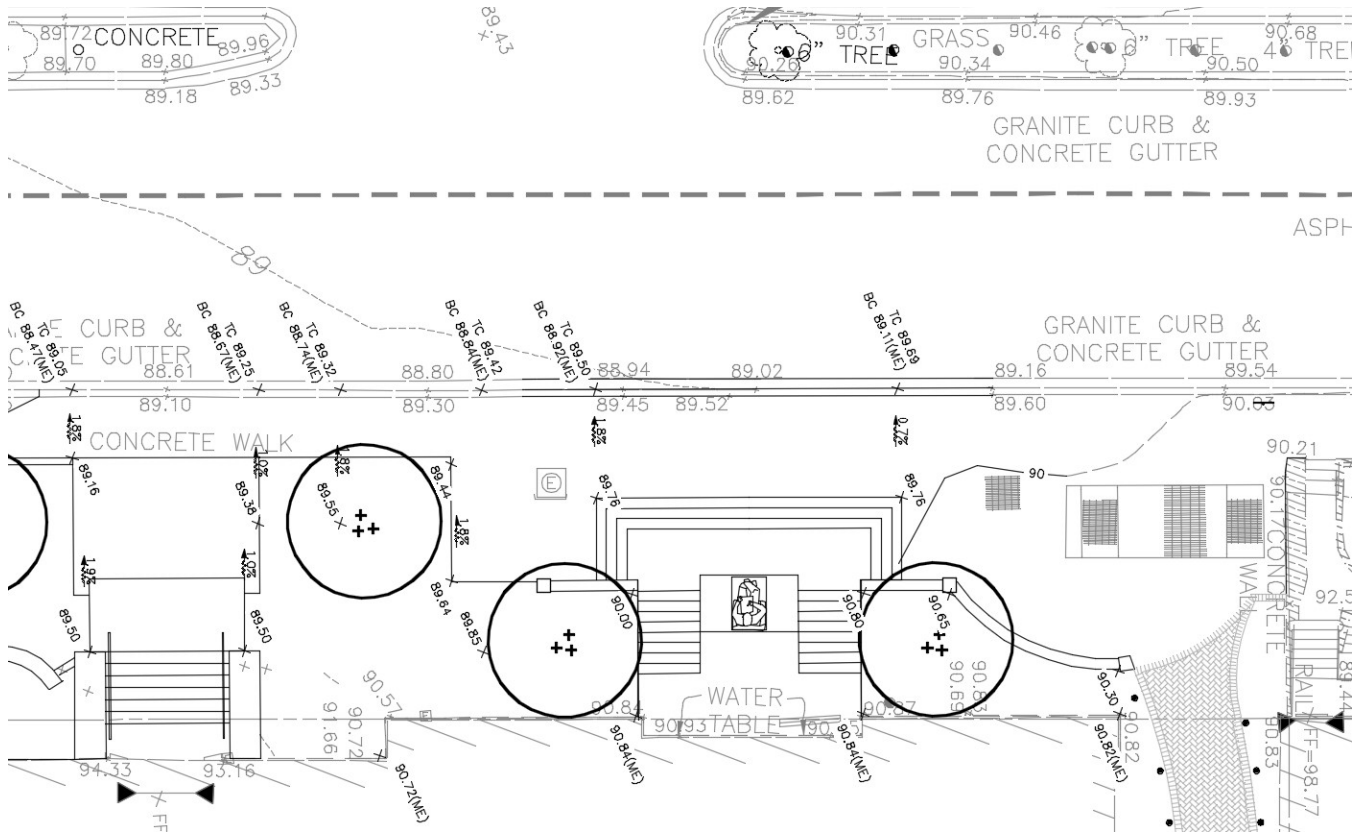


Figure 9 – Grading Plan  
Source: AMT, LLC

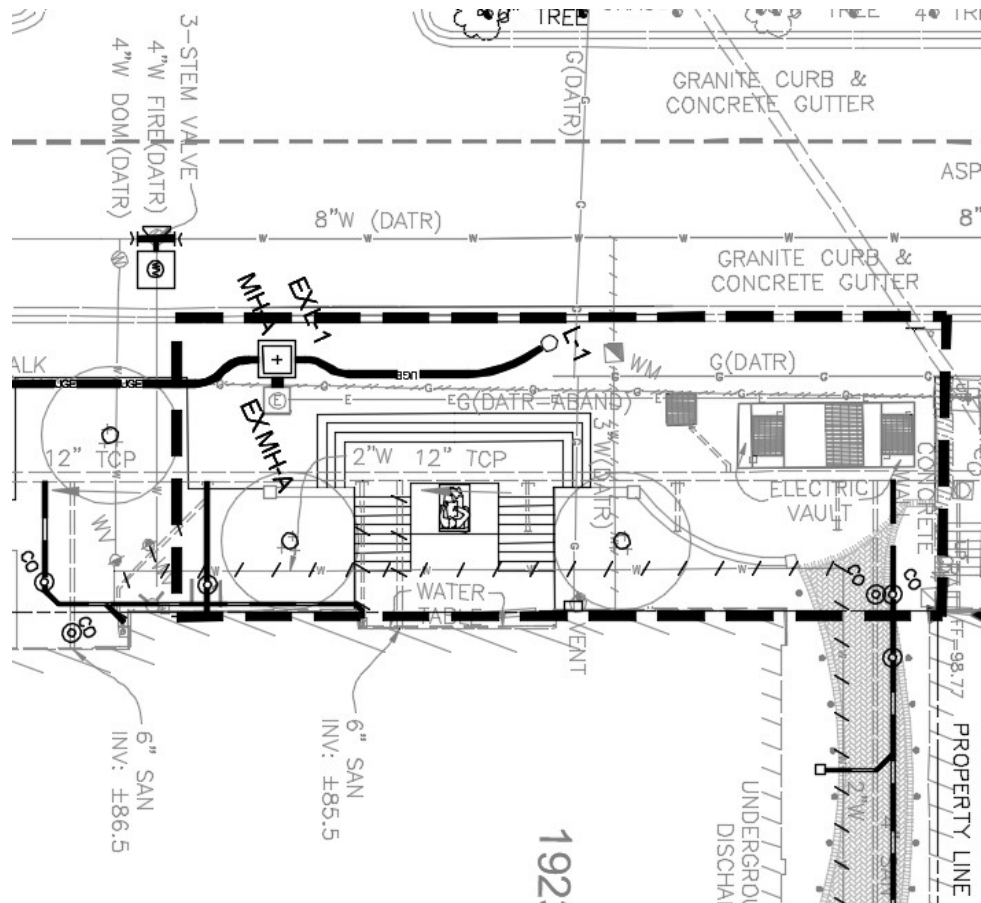


Figure 10 – Utility Plan  
Source: AMT, LLC

### 11. Historic Preservation Considerations

The scope of work encompassing the statue and sidewalk is not part of an historic or protected area. The building's front façade was approved the Historic Preservation Review Board; no restrictions were made.

### 12. Project Compatibility with Existing or Future Plans for the Area

The Lincoln is consistent with the Duke Plan to combine to use art, shrubbery, pavers and art elements to join the Grimke building into an African American Civil War Memorial Plaza.

### 13. Economic Impact

The African American Civil War Memorial had a major focus to use cultural tourist spending dollars to contribute to the fledgling economy of historic U Street. To achieve that goal the AACWMFF obtained funding and authorization to construct the African American Civil War Memorial at the entrance of the U Street Cardoza African American Civil War Memorial subway entrance. Over the past twenty years the memorial and museum have attracted thousands of tourists to the area. The Grimke Development

project will also provide some additional low income housing to the area in addition to about 100 jobs that will be relocated from Maryland as the Torti Gallas architect firm relocates its offices to Grimke.

## IV. PROJECT DESIGN

### 14. Project Design

The existing African American Civil War Museum is being relocated into the newly redeveloped three story, historic brick Grimke School building at 1925 Vermont Avenue, Square/Lot 0361/0837. At this location the Museum will face the existing African American Civil War Plaza on the opposite side of Vermont Avenue NW. The proposed Commemorative Improvements will be the first step, Phase I in establishing a link between the two. Phase II will include additional improvements addressing the Vermont Avenue division and link the two.

The Lincoln Emancipation sculpture freezes Lincoln in the moment when he is signing the Emancipation Proclamation. He is in a sitting position with quill pen in hand while signing his name. The Lincoln is made from bronze, weighs more than six hundred pounds, sits on a bronze base and faces west towards the African American Civil War Memorial which lists the names of 209,145 Lincoln soldiers of the Civil War.

### 15. Project Materials

Granite paving, the same pavers and pattern as those existing paving in the African American Civil World Memorial across Vermont Avenue, is proposed in front of the ceremonial entrance to the Museum to create a visual connection between the Memorial and the Museum. Planting proposed are well suited for the climate in Washington DC area.

### 16. Infrastructure

There are no infrastructure improvements needed specifically for the proposed improvements. Within the area of work, there are existing electric, gas, water, and combined sewer utilities.

### 17. Architectural Design

A major element of the link between the Plaza and the Museum will be a new five feet tall statue of President Lincoln, seated as he signed the Emancipation Proclamation. The newly developed stairs in front of the Grimke School building's north wing shall be modified to accommodate a podium for the placement of the statue and its base, approximately 3'-6" above the sidewalk.

### 18. Schematic Design

Please refer to Appendices E, F, and G for drawings. Granite paving, the same pavers and pattern as those existing paving in the African American Civil World Memorial across Vermont Avenue, is proposed in front of the ceremonial entrance to the Museum to create a visual connection between the Memorial and the Museum. The stairs to the ceremonial entrance are to accommodate a podium for the placement of the statue and its base, approximately 3'-6" above the sidewalk.

## 19. Environmental Analysis

The site is currently under redevelopment by Community Three Grimke, LLC, the landlord. The EISF approval number is 18-00489. The EISF approval package is included in Appendix D for reference. The proposed statue has no impact to vehicular or pedestrian access or circulation.

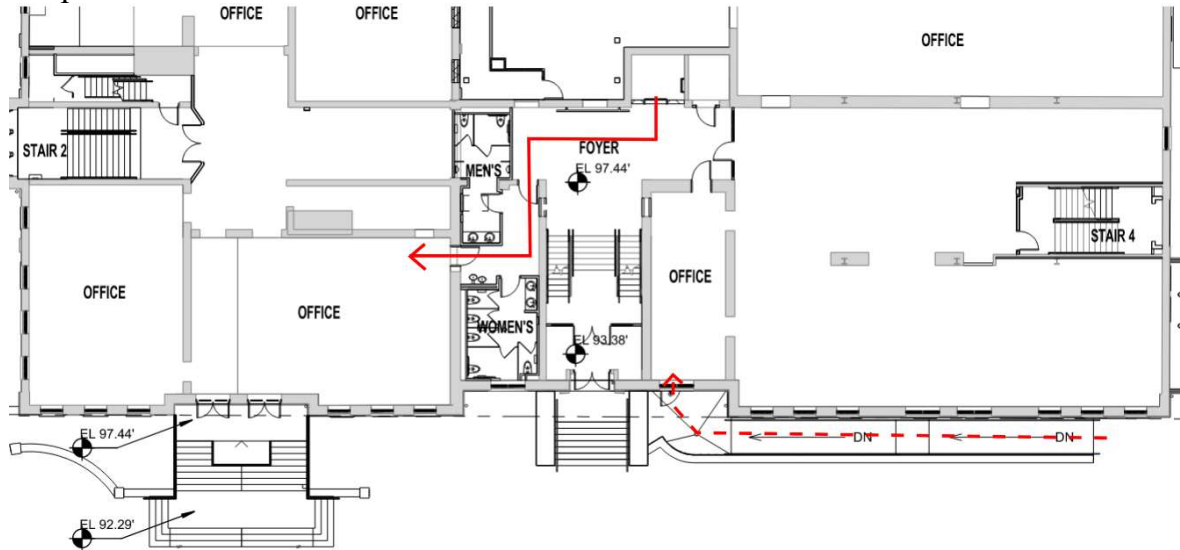
## 20. Potentially Objectionable Construction Impacts

There are no unusual construction conditions associated with the construction of this project. Traffic control plans are being produced and permitted through DDOT in order to safely accommodate pedestrian and vehicular traffic and temporary relocation of a WMATA bus stop.



## 21. Accessibility

The project complies with the American with Disabilities Act (ADA). The monumental stair, which will contain the proposed statue, does not provide ADA access to the Museum; however, ADA-compliant access is provided via an ADA ramp and internal elevators.



## 22. Proposed Timeline

DDOT Preliminary Design Review Meeting	5/4/2020
DDOT Public Space Committee	1/28/2021
CWC Submission	2/15/2021
DDOT Public Space Committee	2/26/2021
Building Permit	March 2021
Construction Commencement	Late March 2021

## V. COMMUNITY OUTREACH

### 23. Community Outreach Program

Please refer to Appendix C for letters of support.

### 24. Letters from Local Stakeholders

Please refer to Appendix C for letters of support.

## VI. PROJECT BUDGET

### 25. Budget and Financing Plan

The Lincoln was purchased with a matching grant from DC Arts that was matched by AACWM fundraising. It has been fabricated and was delivered to the museum last July where it is currently in storage awaiting installation. The construction work necessary to prepare the site for installation is being funded from a grant from DDOT grants office. Formal installation will cost about \$12,000 and the museum has reserved funds for this task.

### 26. Maintenance and Preservation Budget

Refer to Appendix I for the Management and Indemnification Agreement between the African American Civil War Museum as tenant and Community Three Grimke as landlord. The agreement requires the Museum to make a \$25,000 deposit and agree to maintain all improvements in the public space in front of Grimke including the Lincoln statue.

### 27. Insurance

Refer to Appendix I for the Management and Indemnification Agreement between the African American Civil War Museum as tenant and Community Three Grimke as landlord, which requires the Museum to maintain insurance on the items that we install.

## VII. ADDITIONAL MATERIALS

### 28. Construction

Multiple phases of Traffic Control Plans (TCP) provide safe access and passage for pedestrians and vehicles during the construction period.

### 29. Final Drawings

Please refer to Appendices E, F, and G for drawings.

### 30. Financial Ability to Complete Project

The Lincoln statue and all items installed under the Public Space amendment to the Community Three Grimke public space permit is being funded with Museum funds and by a grant from the DDOT Office of Grants.

## Statue

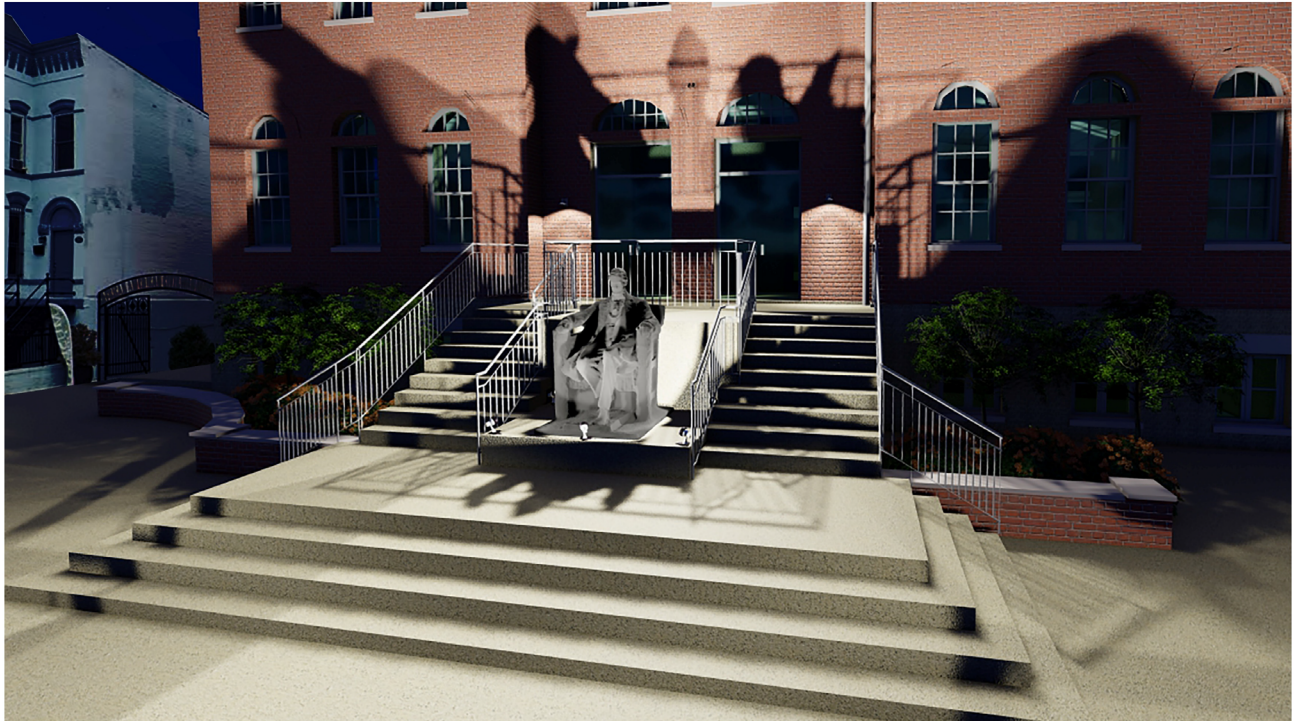




# Renderings



**SULTON CAMPBELL BRITT & ASSOCIATES, P.C.**  
Architecture \* Historic Preservation \* Planning \* LEED™ Consulting



**SULTON CAMPBELL BRITT & ASSOCIATES, P.C.**  
Architecture \* Historic Preservation \* Planning \* LEED™ Consulting