

District of Columbia

STATE DATA CENTER MONTHLY BRIEF

April
2016



By
Travis Pate

These indicators were derived from data produced by the U.S. Census Bureau and may differ from data produced by other entities.

DC – Who is Moving In and Who is Moving Out: A Snapshot from the 2014 American Community Survey

This report provides demographic characteristics for the people who moved into the District of Columbia, and those who moved away. The data are drawn from the 2014 American Community Survey (ACS) 1 year estimates, except where noted.

Note:

- Migration data are produced for the ACS from household surveys and may differ significantly from migration data produced for the Population Estimates program which are based on administrative data.
- Net migration figures do not include those who moved out of DC to live in foreign countries

MOVING IN

- 67,666 people moved in from other states and abroad
- 26.9 percent were 20-24 years old
- 60.1 percent were white
- 76.2 percent had never been married
- 39.0 had a graduate degree
- Median household income was \$30,500



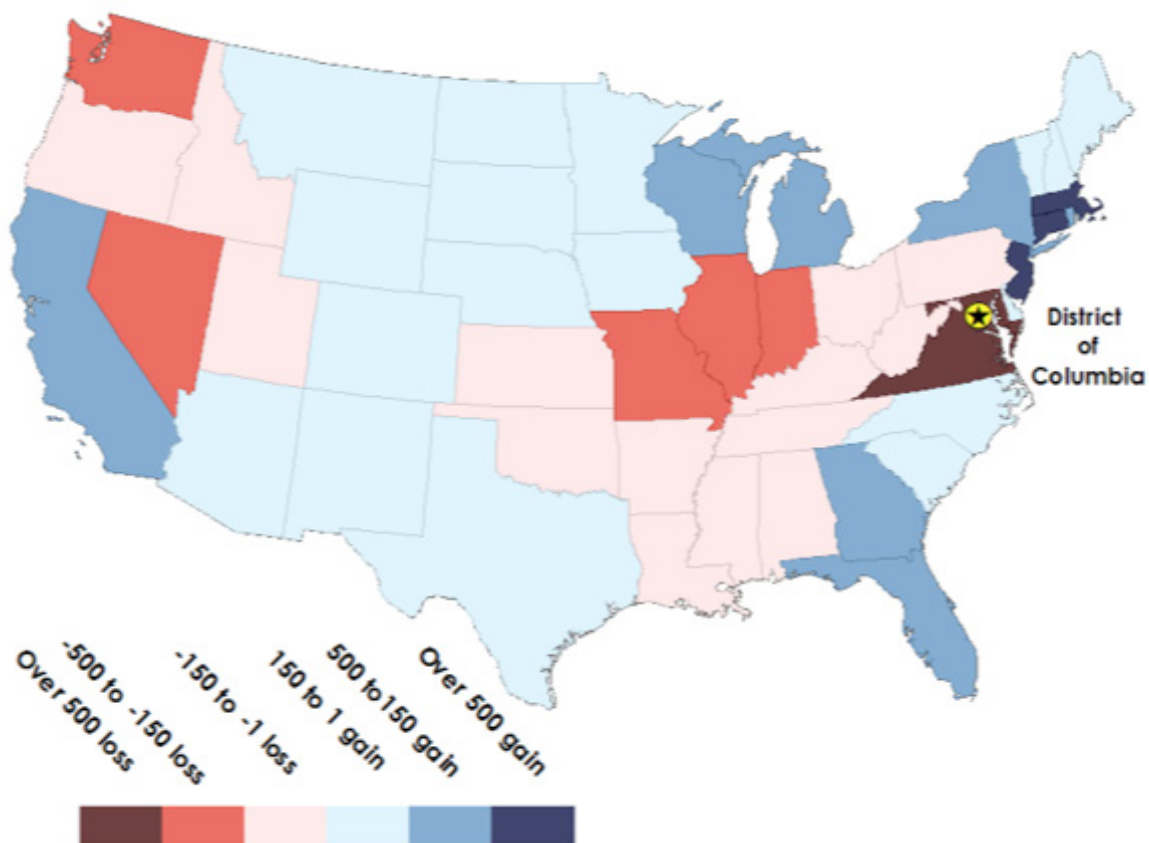
MOVING OUT

- 59,138 people moved to another state
- Net loss of 1,884 children 17 and under, and 1,988 seniors
- Net loss of 3,493 Black/African Americans
- Net loss of 4,370 married people
- Net loss of 856 people with a Bachelor's degree or higher
- Median household income was \$41,557

General:

- Of the 67,666 people who moved to DC in 2014, 56,234 moved from different states in the U.S. to DC and 11,432 moved from abroad.
- In 2014, 59,138 people moved from DC to other states. (Data are not available for people who moved out of DC to foreign countries.)
- Figure 1 shows domestic migration flows from 2009-2013 between DC and states. The map shows the greatest net gain of people from northeastern states, followed by states like California, Florida, Georgia, Wisconsin, and Michigan.
- Figure 1 shows that most people leaving DC moved to Virginia and Maryland

Figure 1: Net domestic migration flows showing which States people are leaving when they move to DC (gains) and which States people are moving to when they leave DC (losses).

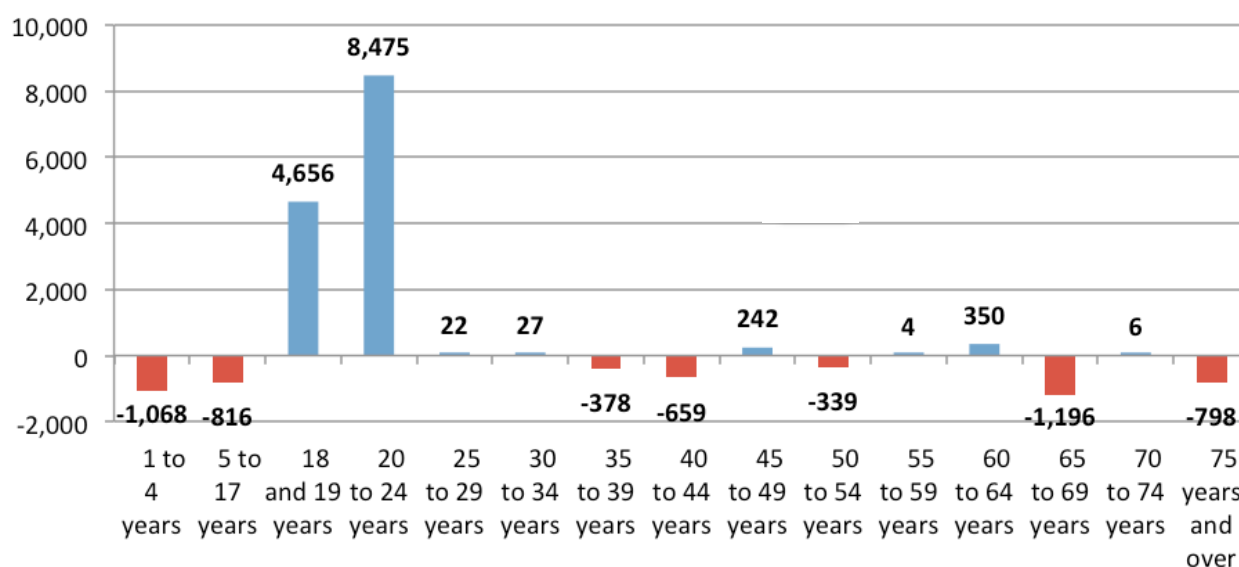


Source: US Census Bureau, County-to-County Migration, 2009-2013 ACS 5-Year Estimates, aggregated to state geographies

Age

- Of the population who moved to DC from another state, the majority were 20-24 years old (26.9 percent) and 25-29 years old (22.1 percent).
- Of the population who moved to DC from abroad, the majority were 20-24 years old (16.8 percent) and 25-29 years old (15.9 percent).
- For all the people who moved to DC in 2014 (domestic or foreign), the majority were 20-24 years old (25.2 percent) and 25-29 years old (21.1 percent).
- Most of the people who moved out of DC to other states were 25-29 years old (24.1 percent) and 20-24 years old (14.5 percent).
- Given the data available, DC had a net gain of 20-24 year olds (8,475) in 2014. Figure 2 show the net gains and net losses in all other age groups.

Figure 2: Net migration by age group for the District of Columbia



Source: US Census Bureau, 2014 ACS 1-Year Estimates

Median Age

- The median age for those who moved to DC from other states was 26.2 years.
- The median age for those who moved out of DC was 28.8 years.

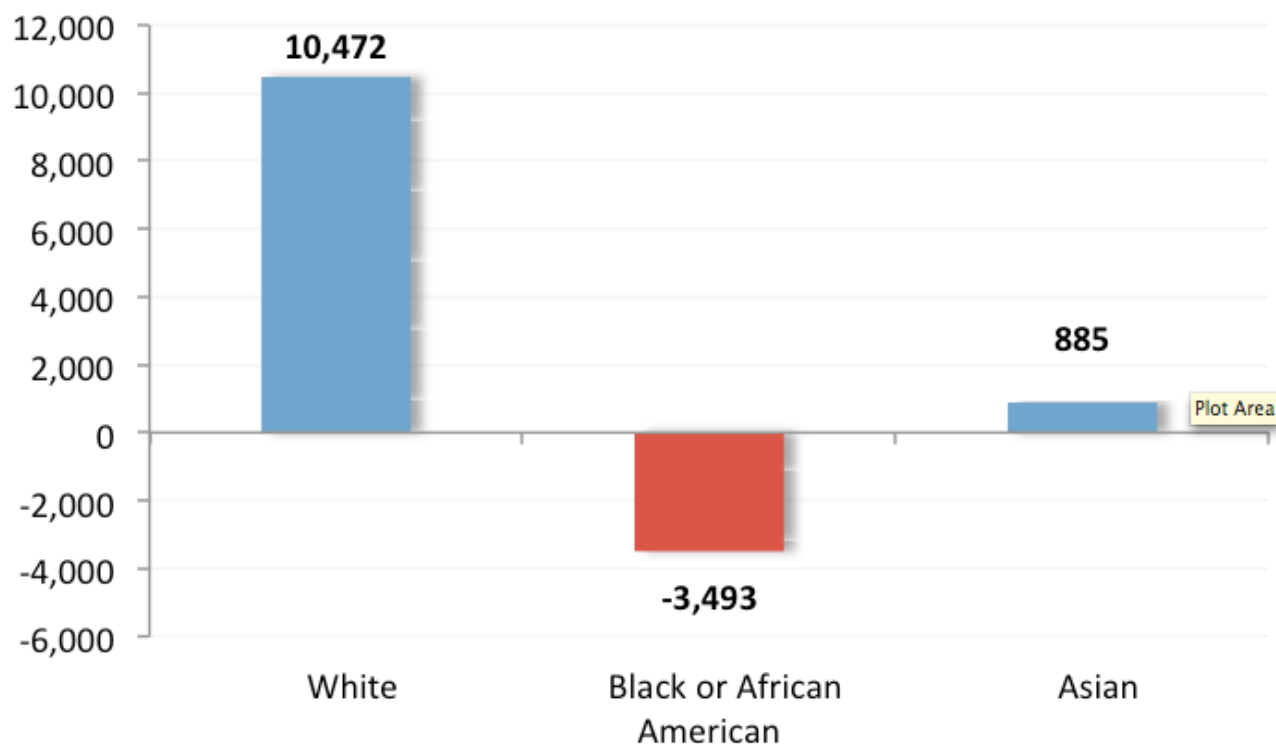
Gender

- Of the total population moving into DC, 53.3 percent were female and 46.7 percent were male. The median age for those who moved out of DC was 28.8 years.
- Of those who moved to DC from other states, 52.1 percent were female and 47.9 percent were male. For those who moved to DC from abroad, 59.2 percent were female and 40.8 percent were male.
- For those who moved out of DC to other states, 53.1 percent were female and 46.9 percent were male.

Race

- In 2014, 60.1 percent of the people who moved to DC from other states were white, 28.6 percent were black, and 5.1 percent were Asian.
- For those who moved to DC from abroad, 69.8 percent were white, 8.3 percent were black, and 12.6 percent were Asian.
- In 2014, 52.9 percent of those who moved out of DC to other states were white, 34.7 percent were black, and 5.8 percent were Asian.
- Figure 3 shows net domestic migration by race for the District of Columbia in 2014.

Figure 3: Net migration by race for the District of Columbia



Source: US Census Bureau, 2014 ACS 1-Year Estimates

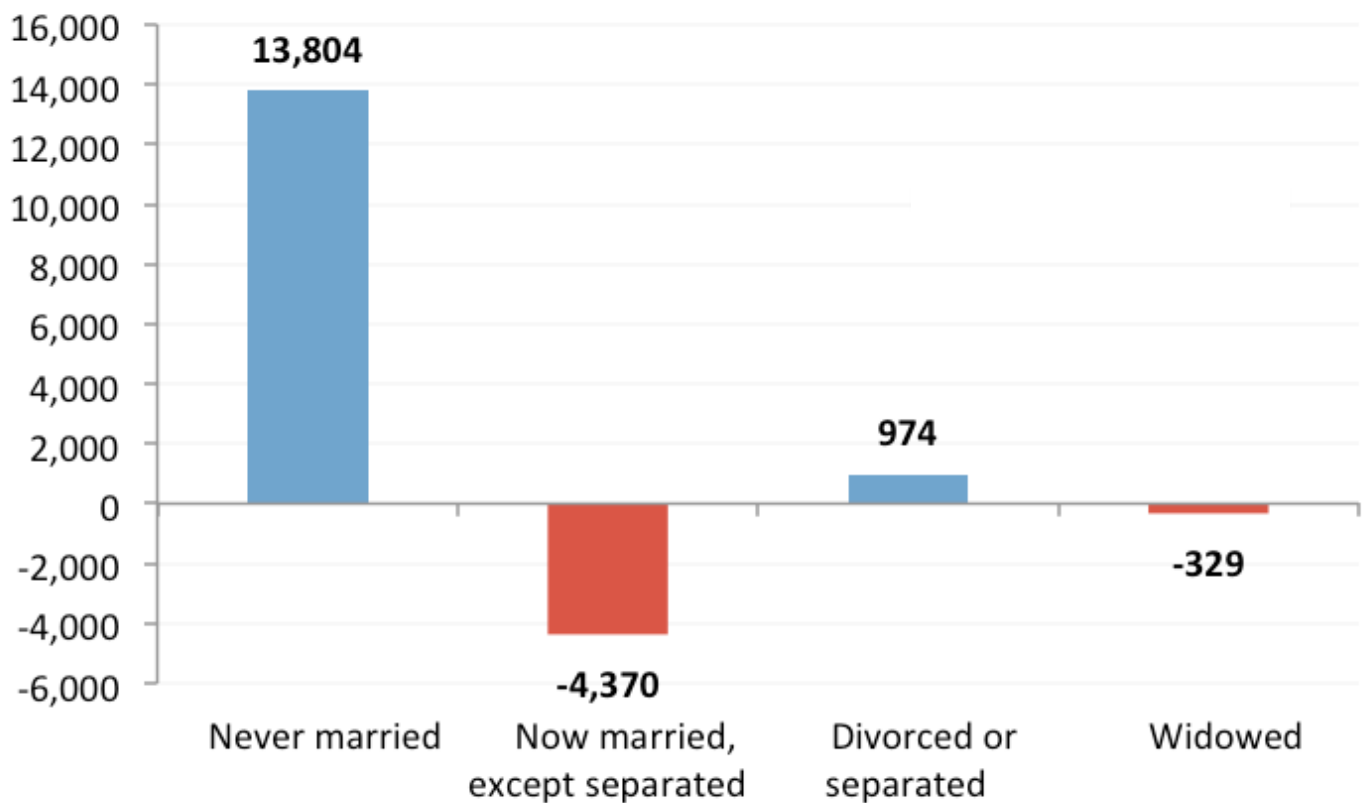
Ethnicity

- Of the people who moved to DC from another state in 2014, 7.4 percent were Hispanic or Latino (of any race). For those who moved to DC from abroad, 18.0 percent were Hispanic. Of those who moved out of DC to other states, 10.6 percent were Hispanic.

Marital Status

- The largest number of people moving to DC had never been married (74.1 percent).
- Of those who moved to DC from another state, 76.2 percent had never been married, 14.4 percent were married, 7.8 percent were divorced or separated, and 1.7 percent were widowed.
- Of those moving to DC from abroad, 62.2 percent had never been married, 32.0 percent of were married, 5.4 percent were divorced or separated, and 0.4 percent were widowed.
- Those who had never been married also made up the majority of those who were moving out of DC to another state (62.4 percent) while 28.3 percent of those leaving DC were married, 7.0 percent were divorced or separate, and 2.3 percent were widowed.
- Figure 4 shows net migration by marital status for the District of Columbia in 2014.

Figure 4: Net migration by marital status for the District of Columbia

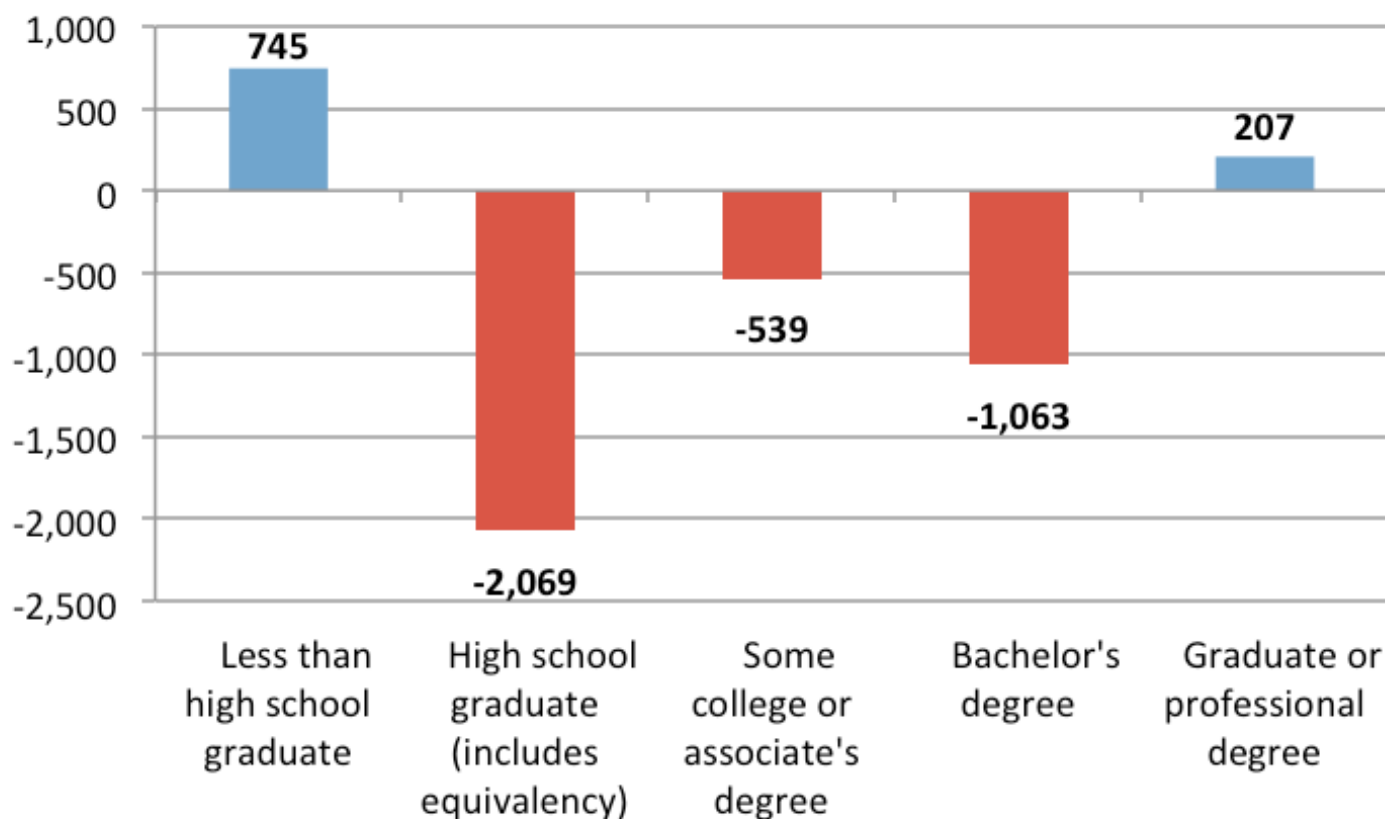


Source: US Census Bureau, 2014 ACS 1-Year Estimates

Educational Attainment

- Of the population 25 years old and over who moved to DC from other states (31,384), 39.0 percent had a graduate or professional degree, 33.6 percent had a bachelor's degree, 13.1 percent had some college or associates degree, 10.1 percent had only a high school diploma, and 4.2 had less than a high school degree.
- Of the population 25 years old and over who moved to DC from abroad (6,656), 56.8 percent had graduate or professional degrees, 33.2 percent had a bachelor's degree, 2.3 percent had some college or associate's degree, none were only a high school graduate, and 7.7 percent did not graduate from high school.
- Those 25 years old and over who moved out of DC to a different state (40,759), 38.8 percent had a graduate or professional degree, 33.9 percent had a bachelor's degree, 11.8 percent had some college or associate's degree, and 12.8 percent had only a high school diploma, and 2.7 percent had less than a high school degree.
- Figure 5 shows the net migration by educational attainment for the District of Columbia for 2014.

Figure 5: Net migration and educational attainment in the District of Columbia

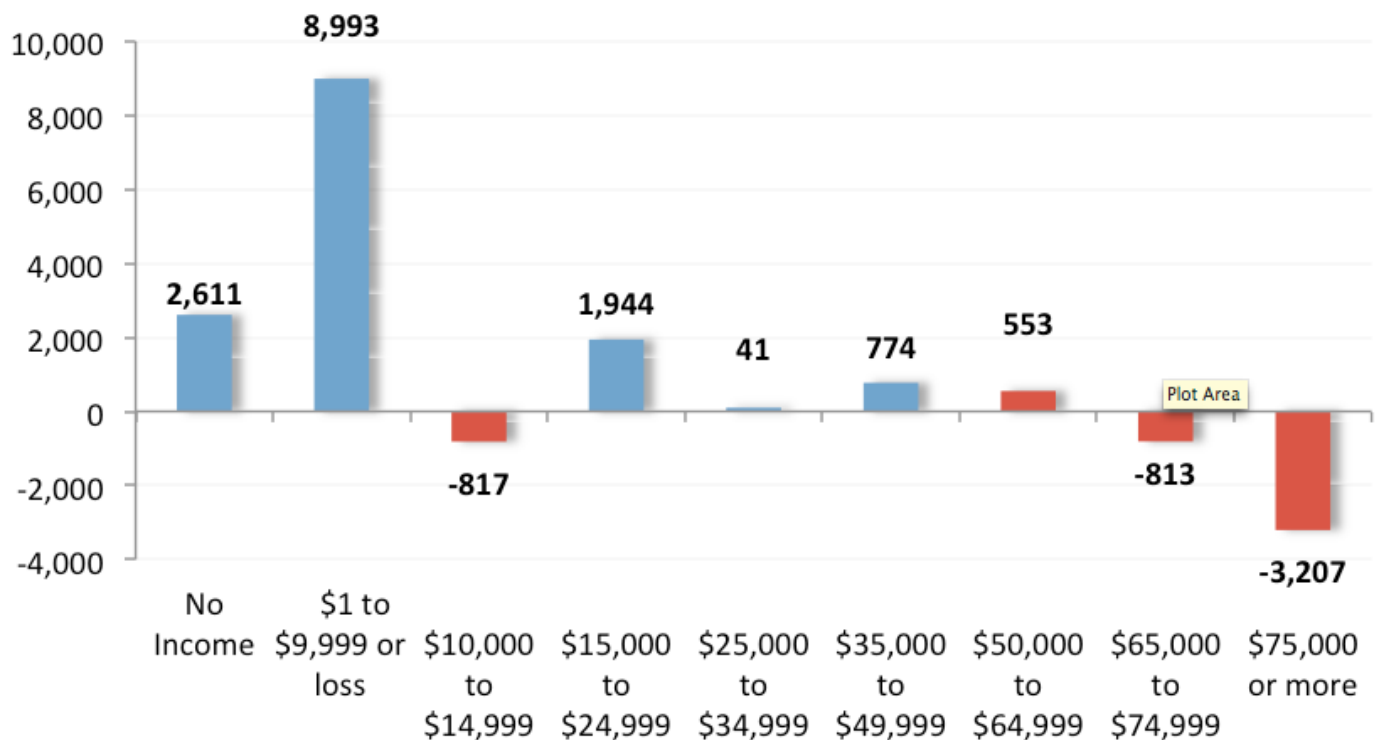


Source: US Census Bureau, 2014 ACS 1-Year Estimates

Individual Income

- In 2014, for the people who moved to DC from other states, 28.0 percent had incomes less than \$10,000, 32.5 percent had incomes between \$10,000 and \$50,000, 26.2 percent had incomes over \$50,000, and 13.3 percent had no income.
- For the people who moved to DC from abroad, 28.0 percent had incomes less than \$10,000, 23.2 percent had incomes between \$10,000 and \$50,000, 24.9 percent had incomes over \$50,000, and 23.9 percent had no income.
- For the population who moved out of DC to another state, 16.6 percent had incomes less than \$10,000, 33.3 percent had incomes between \$10,000 and \$50,000, 37.3 percent had incomes over \$50,000, and 12.8 percent had no income.
- Figure 6 shows net migration by detailed income group for the District of Columbia in 2014

Figure 6: Net migration by income group for the District of Columbia



Source: US Census Bureau, 2014 ACS 1-Year Estimates

Median Income

- The median household income for those who moved to DC from other states was \$30,555.
- The median household income for those who moved to DC from abroad was \$21,867.
- The median household income for those who moved from DC to another state was \$41,557.

Tenure

- For all householders who moved to DC in 2014, 80.8 percent rented their housing and 19.2 percent owned their housing.
- Those who moved from DC to another state, 62.5 percent were living in rental housing and 37.5 percent were living in housing they owned.

For more information contact:
D.C. Office of Planning State Data Center
1100 4th Street SW, Suite E650, Washington, DC 20024
202.442.7600 ph 202.442.7638 fax
www.planning.dc.gov

