

# Commemorative Works Committee

## Program Overview

May 2021

DC Commemorative works are important to our city. They tell the local story of DC and our history – something that can get lost in the context of our National history.



*Metro Memorial Park  
2014*



*Carter G. Woodson Memorial  
2014*



*Chuck Brown Memorial  
2014*



*Abraham Lincoln – Emancipation  
Proclamation  
2021 (Pending)*



District of Columbia  
Office of Planning

## Commemorative Works in DC's Comprehensive Plan

### 812.16 Action PROS-3.1.B: Monument and Memorial Siting

**Actively participate** with the appropriate federal agencies, commissions, and others in discussions and decisions on the **SITING OF NEW MONUMENTS, MEMORIALS, AND OTHER COMMEMORATIVE WORKS** on open spaces within the District of Columbia. 812.16

### 903.9 Policy UD-1.1.3: Siting and Design of Museums, Monuments, and Memorials

Locate commemorative works in **PLACES THAT ARE RELEVANT TO THE SUBJECT** being memorialized where possible. Design commemorative installations to be **ACCESSIBLE TO PEOPLE OF ALL AGES AND VARIOUS DEGREES OF MOBILITY**, and design them in a way that **BENEFITS PUBLIC LIFE. EXPLORE NEW TYPES OF COMMEMORATION**, including temporary installations, light projections, and auditory experiences. 903.9

### 903.11 Action UD-1.1.A: Siting of Landmarks Commemorative Works

**ENHANCE THE DISTRICT GOVERNMENT'S APPROACH TO THE SITING AND REVIEW** of both local and national commemorative works, and **ESTABLISH PROCESSES FOR BETTER COORDINATION** among District and Federal agencies and review. 903.11

**DC Commemorative Works Program**

The one policy and two actions related to commemorative works in the Comprehensive Plan are heavily focused on making sure they are in appropriate locations. Other factors that are emphasized include making sure they are accessible to all residents, providing benefits to the day-to-day life of residents, encouraging creativity in design; and improving review processes.

The District of Columbia is currently conducting an assessment of local memorials and named public places and public buildings to make sure they align with District values and represent all District residents. (See Slide 12)



District of Columbia  
Office of Planning

## Historic DC Memorials



*Metropolitan Police Memorial – 1934 to 1941*



*DC World War I Tree Memorial, 16<sup>th</sup> Street - 1920*



**DC Commemorative Works Program**

The District of Columbia has erected few local commemorative works in the past.

One example is the Washington, D.C., Area Law Enforcement Memorial on Indiana Avenue at the northwest corner of the District Municipal Administration Center. The memorial, designed by the John J. Earley Studio, was built between 1934 and 1941. There is a current effort to restore this memorial.

Another local memorial dedicated in memory of District residents who died in World War I was established in 1920. This memorial included 507 trees planted on 16<sup>th</sup> Street, between Arkansas Avenue and Alaska Avenue. A concrete marker and bronze plate with an individual's name was located at the base of each tree. This memorial was more well known by residents in the past, who would place flowers at a tree for family members on Memorial Day.



District of Columbia  
Office of Planning

## Recently Approved Commemorative Works 2008 to Present

Name	Location	Installation
Marion Barry, Jr. Bronze Statue	1400 Pennsylvania Avenue NW	March 10th, 2018
Carter G. Woodson Memorial	9th Street and Rhode Island Avenue NW	December 5th, 2015
Metro Memorial Park	New Hampshire Avenue and South Dakota Avenue NE	June 22nd, 2015
Chuck Brown Memorial Park	20th Street NE, between Franklin and Hamlin streets	August 22, 2014
Abraham Lincoln – Emancipation Proclamation	1923 Vermont Avenue NW – African American Civil War Museum	Pending



Metro Memorial Park  
2014



Carter G. Woodson Memorial  
2014



Chuck Brown Memorial  
2014



Abraham Lincoln: Emancipation  
Proclamation - 2021 (Pending)

### DC Commemorative Works Program

Since 2014, the District of Columbia has recommended approval of five commemorative works:

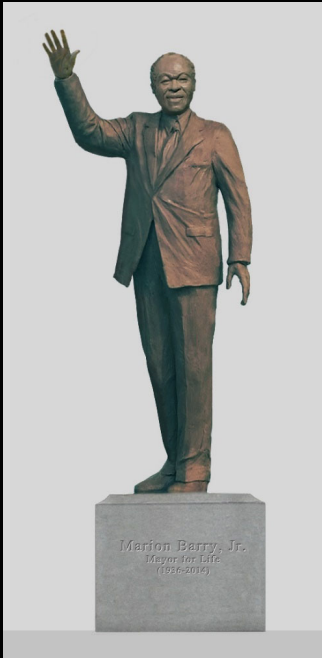
1. Chuck Brown Memorial Park, honoring the local musician;
2. Metro Memorial Park, in memory of nine people who lost their lives in the 2005 crash on Metro's Red Line;
3. Carter G. Woodson Memorial, recognizing the early African American historian;
4. Marion Barry, Jr. Statue, dedicated to the long-time Mayor of the District of Columbia; and,
5. Abraham Lincoln, recognizing the signing of the Emancipation Proclamation.

Recent legislation signed by the Mayor established a study being conducted by the University of the District of Columbia to recommend commemorative works, "to honor remarkable native Washingtonians who left positive indelible marks on American culture or history."



District of Columbia  
Office of Planning

## What qualifies as a commemorative work in public space?



*Marion Barry Statue - 2017  
Wilson Building Grounds  
Commemorative Work*

**"Commemorative work"**—any statue, monument, sculpture, streetscape or landscape feature, including a garden or memorial grove, or other structure, which is located on public space and which is designed to perpetuate in a permanent manner the memory of an individual, group, event, or other significant element of international, national, or local culture or history.

**"Public space"**—any public street, alley, circle, bridge, building, park, other public place or property owned by or under the administrative control or jurisdiction of the District of Columbia.



*Adams Memorial - 1891  
Rock Creek Cemetery  
Not a Commemorative Work*

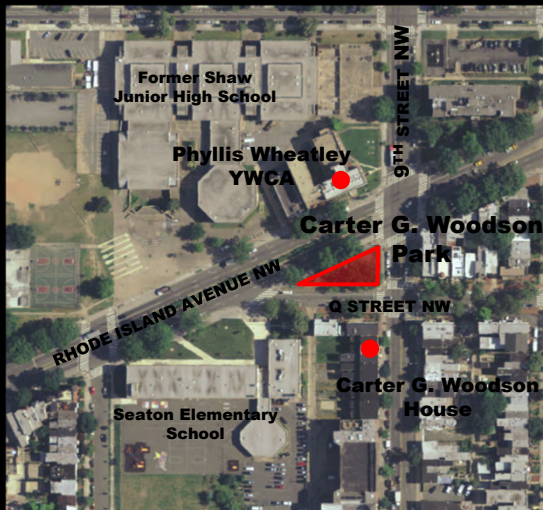
**DC Commemorative Works Program**

The District of Columbia's current commemorative works review process was developed in response to a federal plan to decrease the number of federal commemorative works on the National Mall and encourage locating them off the Mall and in District neighborhoods. DC Council adopted the Commemorative Works Amendment Act of 2000 that defines what qualifies as a commemorative work. The legislation anticipated the District would receive applications for large-scale memorials like those being proposed on the National Mall. Twenty years after the legislation has passed, the Commemorative Works Committee has received very few applications for this type and scale of memorial. In response to the demographic changes and scale of new development in all parts of the District, there has been an increasing interest in creating local memorials that better reflect the diversity of our residents and celebrate the places and events that define District neighborhoods.



## What is the Committee and What is its Purview?

Commemorative Works Committee established to advise the Mayor and DC Council on requests for placing commemorative works on public space in DC.



*Carter G. Woodson Site Selection*

### Reviews each application for:

1. Appropriateness of the location, subject matter, and design of the commemorative work, including the aesthetic, environmental, traffic and parking, and financial impacts of the proposal upon the surrounding community and the District
2. The sufficiency of the sponsor to fund the construction and maintenance of the commemorative work.

### The Commemorative Works

Amendment Act of 2000 also created the Commemorative Works

Committee to review applications and advise the Mayor and District Council who are required to take a final action on the commemorative work. All

reviews and comments on applications are considered by the Committee prior to advising the Mayor and District Council.

## Commemorative Works Committee

### Current Members

Name	Seat Designation	Status
Andrew Trueblood	OP, Chair	Ex Officio Member
Dulce Naime	DPR	Ex Officio Member
Lauren Dugas-Glover	CAH	Ex Officio Member
Marnique Heath	HPRB	Ex Officio Member
Joe Coleman	Public Member	Current
Otto Condon	Public Member	Current
Vacant*	Public Member	Vacant
Vacant*	Public Member	Vacant
Vacant*	Public Member	Vacant

**\*Pending confirmation from the District Council**

The Commemorative Work on Public Space Amendment Act of 2000 also establishes the Commemorative Works Committee to advise the Mayor and District Council on commemorative works applications. Membership was amended in 2021 to add additional public members. The Committee is chaired by the Director of the Office of Planning, includes eight other District of Columbia agencies, and three citizen members appointed by the Mayor.

If you are a resident of the District of Columbia and interested in serving as a Public Member of the Commemorative Works Committee, check out how to join a board or commission on the Mayor's Office of Talent and Appointments webpage:

<https://mota.dc.gov/page/join-board-or-commission>. Citizen members are required to have an active interest or background in visual arts, architecture, urban planning, civic design, or history.



District of Columbia  
Office of Planning

## Commemorative Works Committee

### Meeting Dates

Meeting Dates	Filing Deadline
April 30	April 9
May 21	April 30
June 18	May 28
July 16	June 25
August 20	July 30
September 17	August 27
October 15	September 24
November 19	October 29
December 17	November 26

More information about past and upcoming Committee meetings  
is posted at [www.open-dc.gov](http://www.open-dc.gov)

DC Commemorative Works Program

The Commemorative Works Committee meets the third Friday of every month. Filing dates for applications are three weeks prior to the meeting to give staff time to prepare a report on the application for Committee members to review.



## Guidelines for Consideration of Applications

1. Commemorative works that recognize local individuals, groups, events, or other significant elements of District of Columbia culture or history generally should be prioritized over other commemorative works.
2. Subjects of commemorative works should be of long-term historic importance, not be any living person, nor any deceased person who has been deceased less than 10 years or any event that has occurred within 10 years.
3. The location of a commemorative work shall be relevant to and compatible with the subject of the commemorative work.
4. A commemorative work shall be situated in a manner that prevents interference with an existing commemorative work, and that protects and enhances open space, existing public and private uses, and cultural and natural resources.
5. A commemorative work shall be constructed of durable material suitable to the outdoor environment, and any landscape features of a commemorative work shall be compatible with the climate.

The Commemorative Work on Public Space Amendment Act of 2000 also establishes basic guidelines for the Commemorative Works Committee to use when reviewing an application.



## Required Reviews and Approval\*



*Metro Memorial Park Dedication - 2015*

National Capital Memorial  
Advisory Commission



Advisory Neighborhood  
Commission



Commemorative Works  
Committee



DC Council

DC's current review process for commemorative works is defined in the Commemorative Work on Public Space Amendment Act of 2000. It includes review and comment by impacted Advisory Neighborhood Commissions and the National Capital Memorial Advisory Commission, a federal body established to review and makes recommendations on federal commemorative works in the District of Columbia. Other reviews that may be required – although not by the Act – include those by the National Capital Planning Commission, Commission of Fine Arts, and DC Historic Preservation Office.

\*Other reviews that may be required - but are not required by the Commemorative Works in Public Space Act of 2000 - include National Capital Planning Commission, Commission of Fine Arts, and the DC Historic Preservation Office.

### **DC Commemorative Works Program**

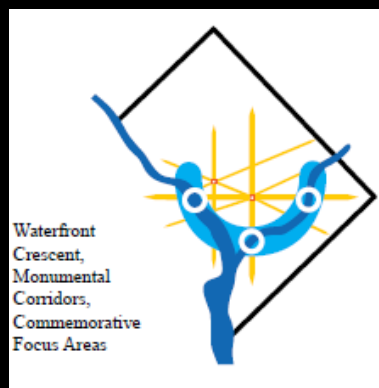


District of Columbia  
Office of Planning

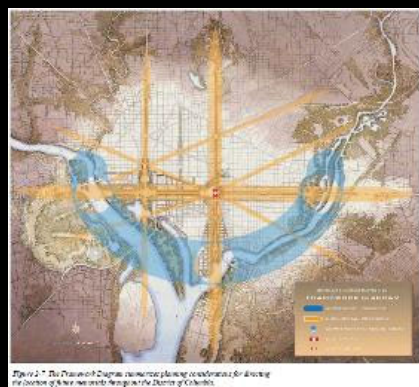
# Location Strategy

## BACKGROUND

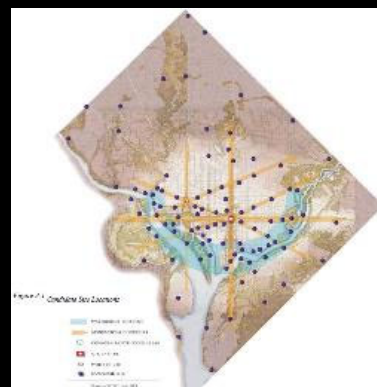
### Develop the District's First Location Strategy for Commemorative Works



Define Location Concepts



Apply to City Plan



Identify Specific Sites

#### Three Concepts

1. Ceremonial Corridors
2. Community Spaces
3. Shared Spaces

#### Places in the City Plan

1. Small Parks and Open Spaces
2. Streets and Sidewalks
3. Civic Buildings and Spaces
4. Large Parks, Waterfronts, and Plazas

#### DC Commemorative Works Program

The District of Columbia is coordinating its planning for commemorative works with the National Capital Planning Commission (NCPC), the federal planning office responsible for reviewing the siting and location of federal commemorative works. NCPC is currently updating their Memorial and Museum Master Plan.

## Current Work Program

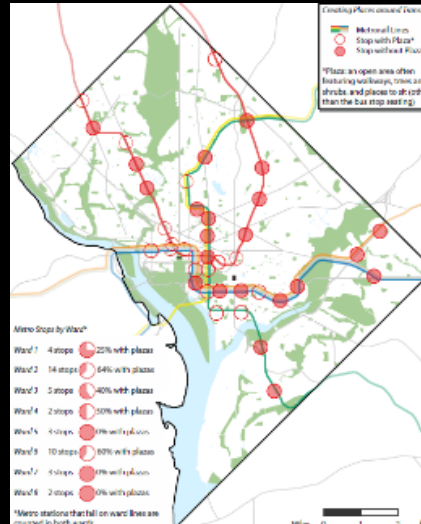
### 1. Ceremonial Corridors



#### Gateway Corridors

- MacArthur Boulevard
- 16<sup>th</sup> Street
- Rhode Island Avenue
- East Capitol Street

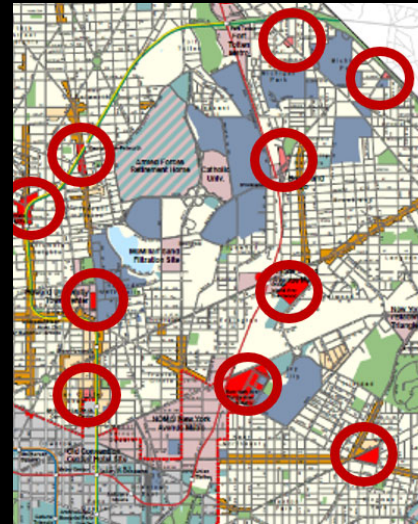
### 2. Shared Spaces



#### High Ridership Metro Lines + Stations w/ and w/out Plazas

- Tenley Town
- Petworth
- Rhode Island Avenue
- Benning Road
- Alabama Avenue

### 3. Community Spaces



#### Comprehensive Plan Commercial Mixed-Use Areas

- Regional Centers
- Multi-Neighborhood Centers
- Neighborhood Commercial Centers
- Main Street Mixed-Use Corridors

More information is posted here: <https://publicinput.com/commemorativeworks>

#### DC Commemorative Works Program

The Office of Planning (OP) is currently developing a location strategy that will identify potential sites for commemorative works in the District of Columbia. OP is coordinating with other government agencies and getting feedback on the plan from the Commemorative Works Committee. The location strategy will identify sites based on three types of places:

1. Ceremonial Corridors – highly visible sites and appropriate for universal experiences or public figures of city-wide importance;
2. Community Spaces – locations in neighborhoods appropriate for subjects closely associated with a specific area of the District of Columbia; and,
3. Shared Spaces – places where residents from all across the city come together and ideal locations for cultural symbols or events that all residents or the District of Columbia relate to.

The graphics and places shown on this slide are representative examples of locations being considered for each type of place.



District of Columbia  
Office of Planning

## Task Force on Facilities and Commemorative Expressions (DC FACES)



*Albert Pike Memorial*



*Black Lives Matter Plaza*

Mayor Bowser's Task Force on Facilities and Commemorative Expressions (DC FACES) that is evaluating local commemorative works to ensure they align with District of Columbia Values is timely considering recent public events and discussions about who and what is commemorated.

The final recommendation of the Task Force is posted here: <https://mayor.dc.gov/dcfaces>

### DC Commemorative Works Program

Today - amidst a national discussion of who and what should be commemorated - there is a renewed interest in promoting commemorative work of local people and events. Towards this effort, the Office of Planning:

1. Reviewed all aspects of the current commemorative work legislation;
2. Considered an expanded role for the District of Columbia in planning for and envisioning the future of local commemorative works; and,
3. Participated on the Task Force on Facilities and Commemorative Expressions (DC FACES) to ensure existing local commemoration of all types aligns with DC values.