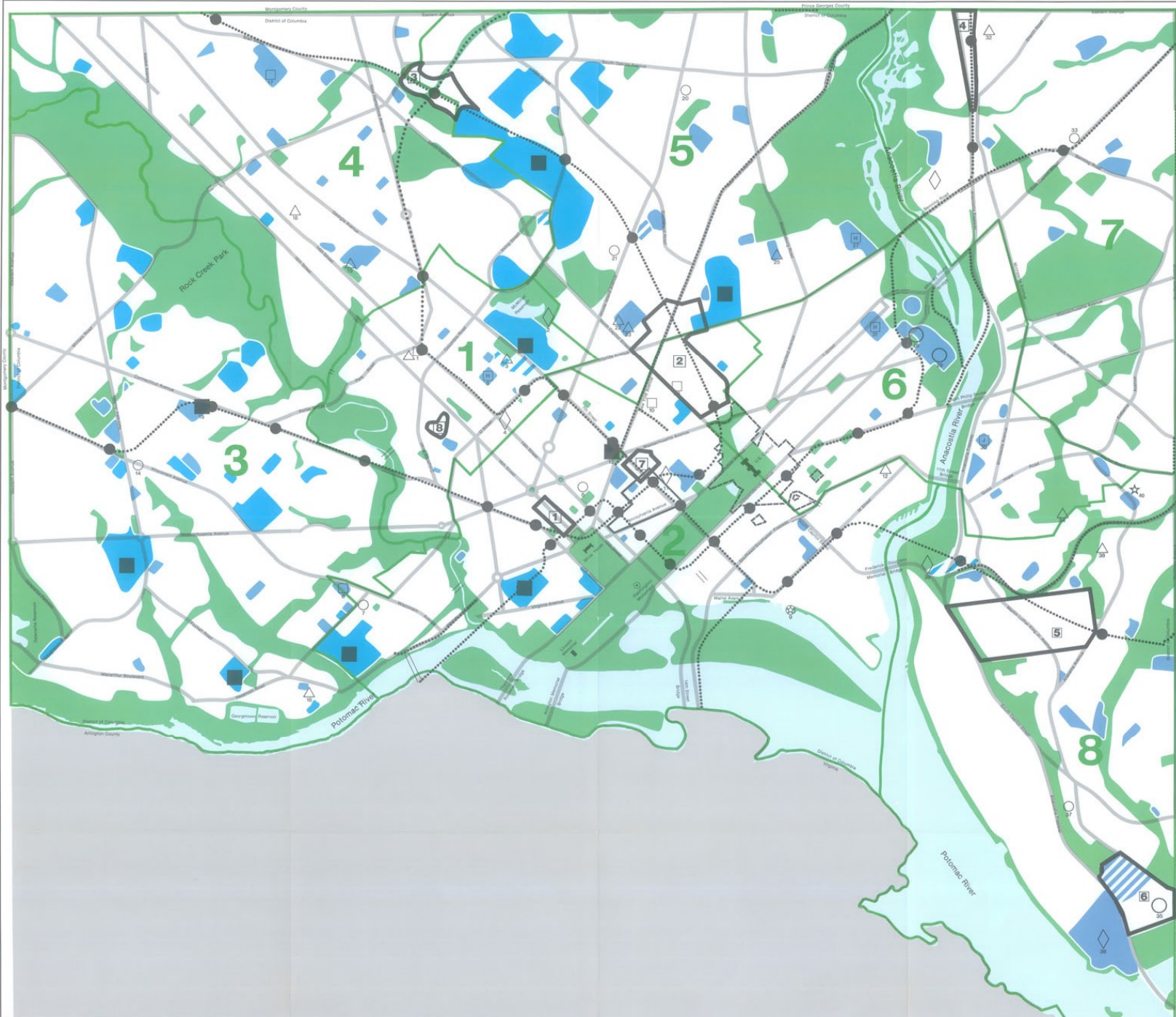


District of Columbia Generalized Local, Public, and Institutional Land Use Policies Map



legend

public and institutional land use categories

- local public facilities
Land and facilities occupied by the District government, including parks, recreation centers, and open space, as the predominant uses.
- institutional
Land and facilities occupied by colleges, universities, hospitals, religious institutions and similar facilities as the predominant uses.
- parks, recreation and open space
District government parks and recreation centers, cemeteries and the National Capital Open Space System as the predominant uses. The National Capital Open Space System is defined in the Parks, Open Space and Natural Features Element.

mixed use

A combination of land use categories are depicted in areas where a variety of uses are to be encouraged. Mixed use areas include existing commercial areas and areas proposed for significant land use changes.

- college and university master plans
- recreation center
- fire station
- career development center
- police district stations
- police and fire harbor unit
- health and social service center
- government support facility
- schools
 - high school
 - junior high school
 - elementary
- highway improvements
- bridge improvements

capital improvements

- Ward 1:** 1. Bell Career Development Center; 2. Bryant Street Pumping Station; 3. Banneker Clubhouse Rehabilitation; 4. U Street Municipal Center; 5. Cardozo High School
- Ward 2:** 6. Engine Co. No. 16 Replacement; 7. Engine Co. No. 5 Rehabilitation; 8. Gordon Adult Education Center Rehabilitation; 9. Waterfront Police and Fire Harbor Unit; 10. Walker-Jones Special Education Center; 11. North and South Potomac Buildings Acquisition; 12. Virginia Avenue Playground Rehabilitation; 13. UDC/Mount Vernon Square
- Ward 3:** 14. Engine Co. No. 20 Replacement; 15. UDC/Van Ness; 16. Hardy Recreation Center Rehabilitation
- Ward 4:** 17. Coolidge High School Rehabilitation; 18. Hamilton Recreation Center Rehabilitation; 19. Upshur Recreation Center Rehabilitation
- Ward 5:** 20. Engine Co. No. 14 Replacement; 21. Engine Co. No. 17 Replacement; 22. Langley Recreation Center Rehabilitation; 23. Receiving Home Renovation; 24. Public Works Vehicle Maintenance Facility; 25. Trinidad Recreation Center Rehabilitation; 26. Washington Career Development Center; 27. Spingarn High School Rehabilitation
- Ward 6:** 28. D.C. Jail Improvements; 29. D.C. General Hospital Improvements; 30. Kramer Junior High School; 31. Eastern High School; 32. Stanton Recreation Center Rehabilitation
- Ward 7:** 33. Deanwood Recreation Center Rehabilitation; 34. Engine Co. No. 30 Rehabilitation
- Ward 8:** 35. D.C. Village Rehabilitation; 36. Blue Plains Improvements; 37. High Intensity Fire Training Building; 38. Douglass Community Center Rehabilitation; 39. Poplar Point Pumping Station Replacement; 40. 7th District Replacement

special treatment areas

- 1. Lower 16th Street, N.W.; 2. Northeast No. 1/ Eckington Yards; 3. Fort Totten Metro Station Area; 4. Deanwood Metro Station Area; 5. Saint Elizabeths Hospital; 6. D.C. Village; 7. Chinatown
- 8. Reed-Cooke

metro

- adopted regional system (ARS)
- U.S. Capitol Master Plan Area (see Master Plan for Specific Boundaries)



Scale 1:50'

Note: This map illustrates certain anticipated major new construction or major rehabilitation of District government facilities. This is not a complete listing of these projects currently approved as part of the District's Capital Improvements Program, which may be modified in accordance with District law.